

# SEA LEVEL RISE



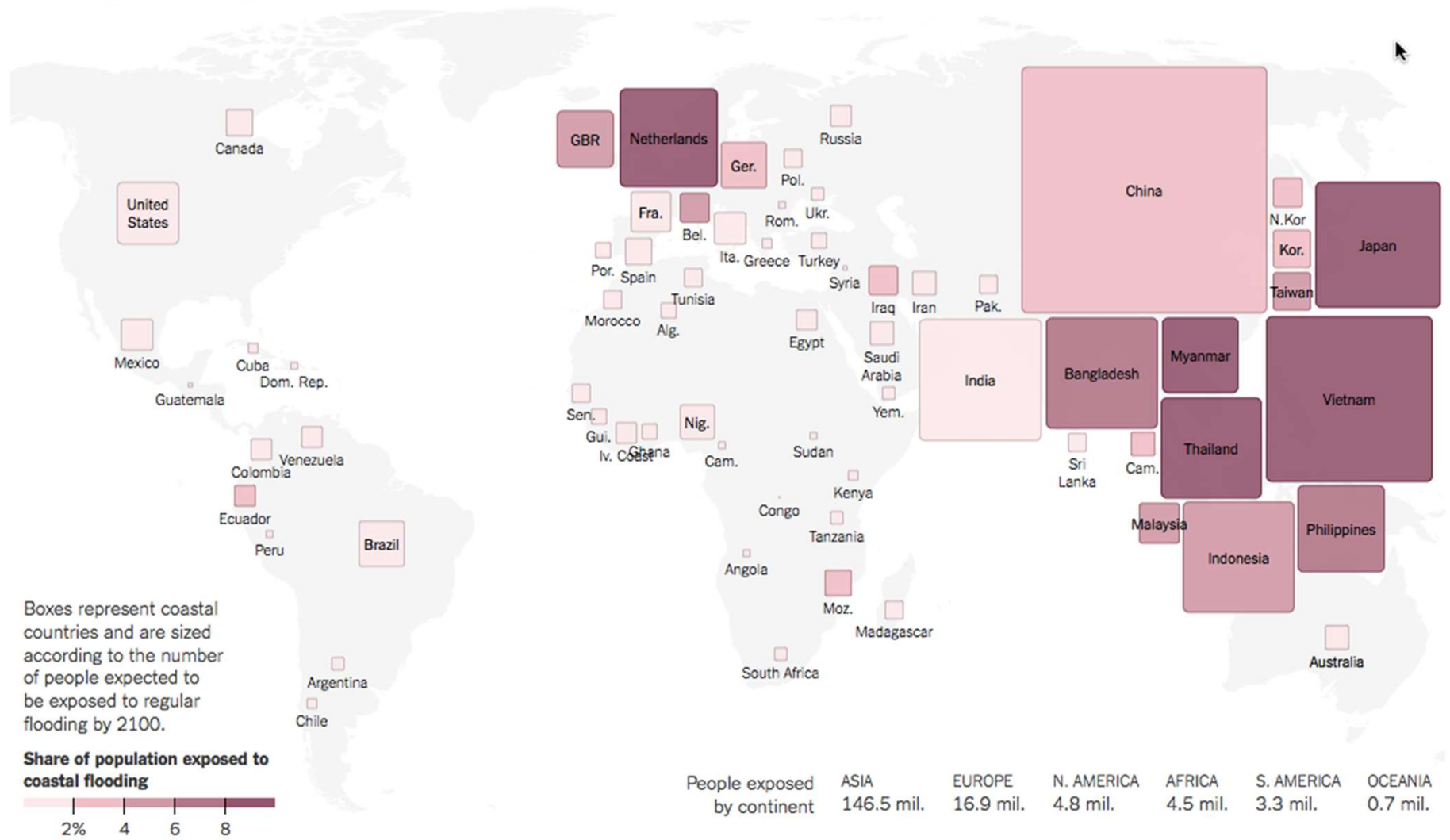
Media Briefing

June 6, 2018

# Sciline Sea Level Rise Media Briefing

Slides presented by  
Dr. Ben Strauss  
President, CEO, and Chief Scientist  
Climate Central

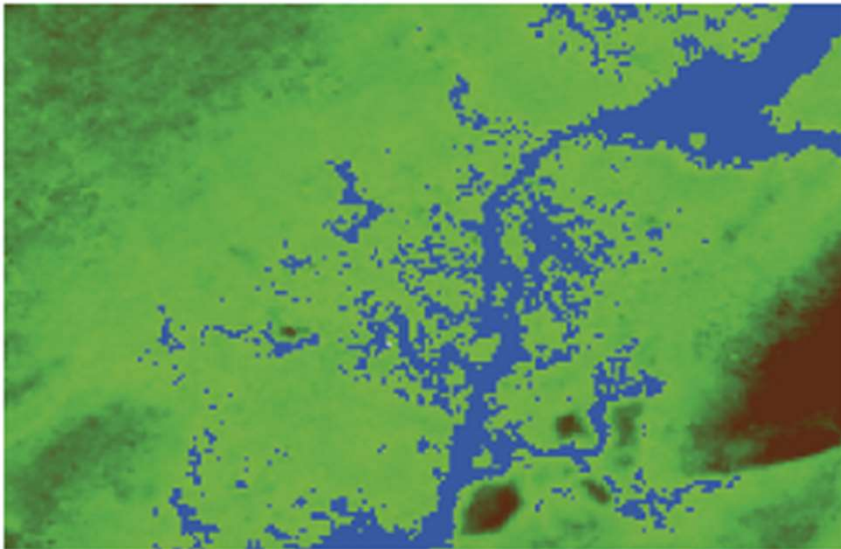
If global carbon emissions  and sea levels are affected by climate change , about **2.6 percent of the global population** (about 177 million people) will be living in a place at risk of regular flooding.



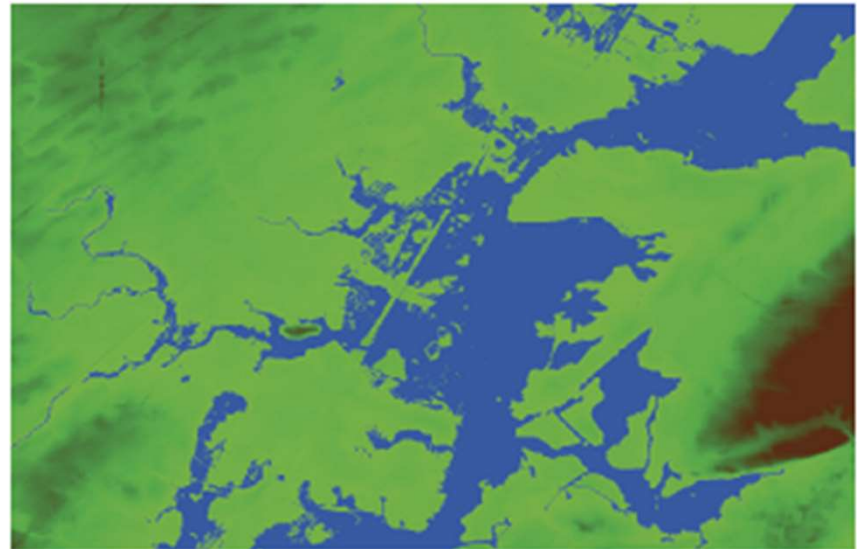
# Global elevation data underestimate coastal exposure to sea level rise & flooding

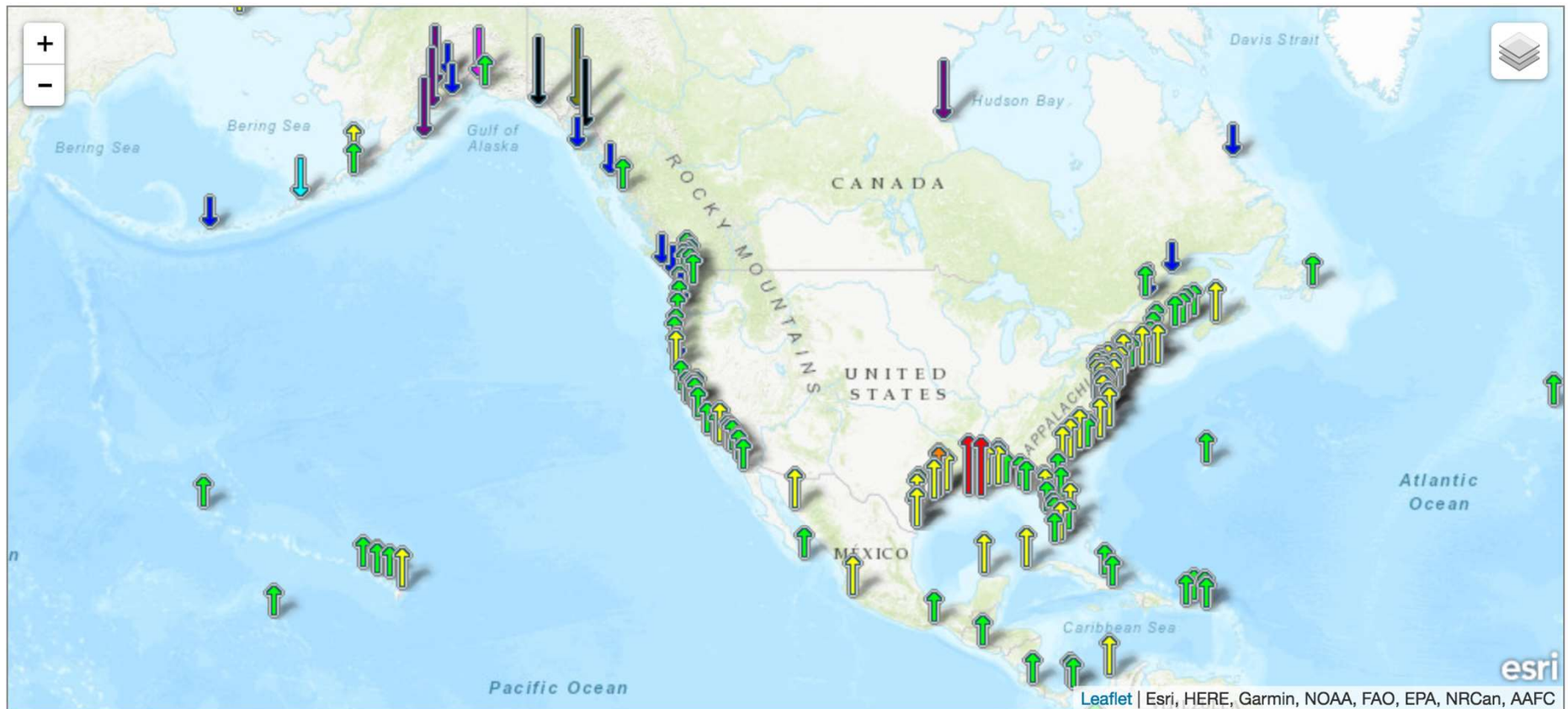
## Global Elevation Data Underestimate Exposure to Rising Seas

Global Data



U.S. Data



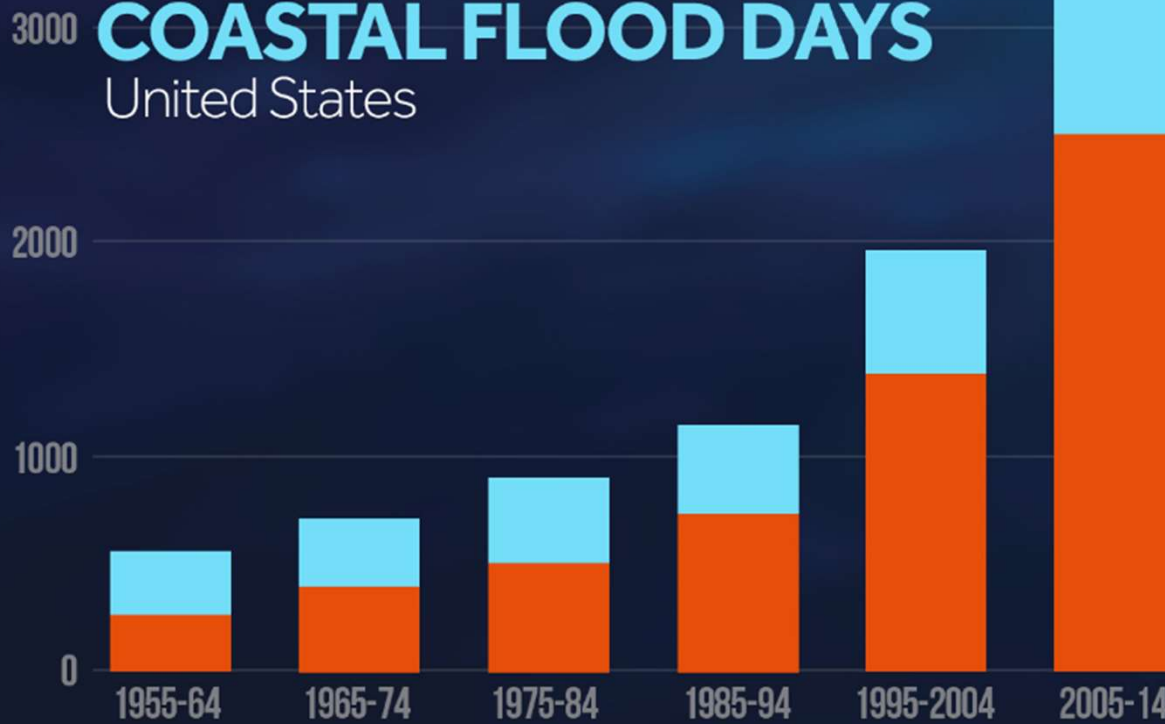


The map above illustrates regional trends in sea level, with arrows representing the direction and magnitude of change. Click on an arrow to access additional information about that station.



# NATURAL + HUMAN-CAUSED COASTAL FLOOD DAYS

United States

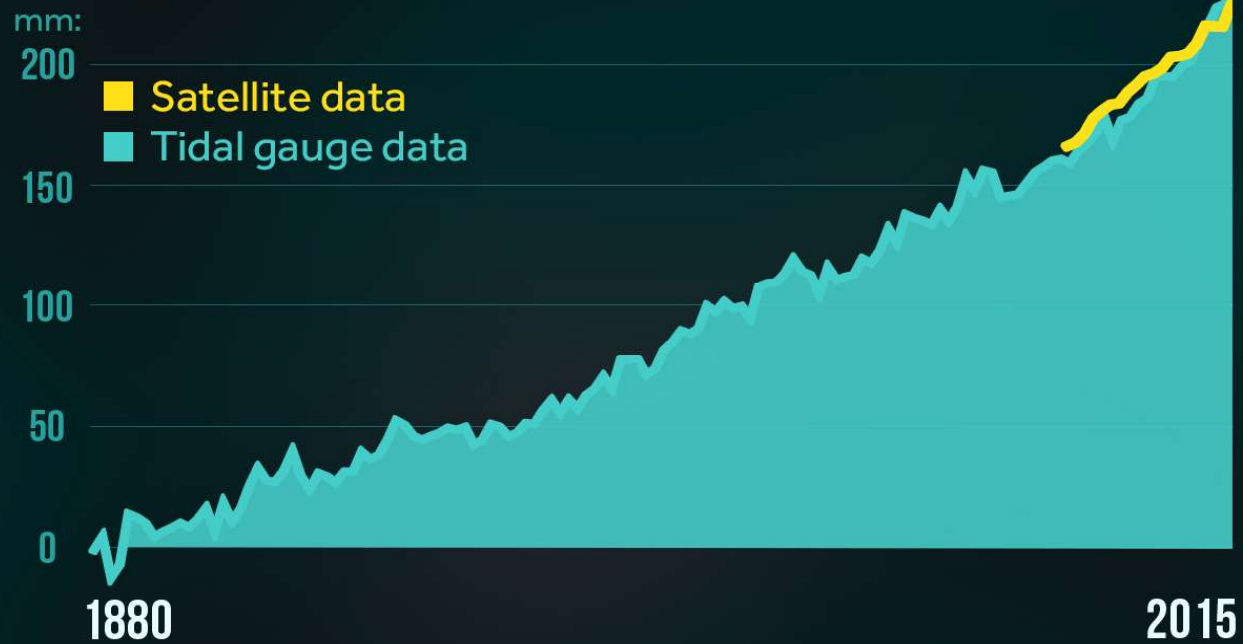


Orange shows human-caused global sea level rise effects  
Floods totaled across 27 sites; must top NWS 'nuisance' thresholds  
Source: Kopp et al. 2016 (PNAS), NOAA, & Climate Central



# SEA LEVELS RISING

## Global Mean Sea Level



Source: Commonwealth Scientific and Industrial Research Organisation (CSIRO)



For more information about this Media Briefing:

<https://www.sciline.org/media-briefings/>